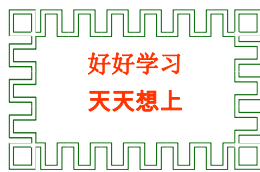


RENREN CHINESE 人人中文



Ray Chinese School
P.O.Box 4018
Naperville, IL 60567

630-401-9851
rcsonline@yahoo.com



ASIA: NEW TOP OF THE CLASS

Asia is top of the class and the US is lagging behind, according to a new world-wide survey of the skills of school students. The results of Program for International Student Assessment (PISA) were released. The global assessment compared the reading, math, and science skills sets of 15-year-olds in 65 countries.



Shanghai was first, with Hong Kong SAR in second place and Finland third. Eight out of the 10 top spots were taken by Asia-Pacific countries or regions.

Meanwhile the United States—once a leader in education through much of the 20th century—came in a disappointing 26th when the results of the three categories were averaged out. The U.S. ranked 14 in reading, virtually the same ranking as the 2003 test, 17th in science, which is an improvement from 21st in 2006; and 25th in mathematics, the same ranking as 2006. The good news is that U.S. students, especially those with the lowest performance, have significantly improved in science since 2006.

Any definition of a world-class education must include knowledge of Asia and the language and cultural skills to deal with Asia. It's a two-way street: America must now learn from—and with—Asia and the world.

International comparisons are increasingly relevant and important to understand in today's global environment. No longer do the residents of American cities and states vie only with each other for jobs; their competitors are located in countries around the world. To remain competitive, the U.S. must reform its education system to meet the challenges of the 21st century. Steps have already been taken in this direction through the Common Core State Standards. (<http://asiasociety.org/education-learning/learning-world/asia-new-top-class>)

RCS Announcements

12/6/2010, registration start for existing students.
12/13/2010, registration open to all students.

If you cannot register online by yourself and request our staff to register in office, there will be \$5 charge.

~~~~~  
Ray Chinese School Directory will be published by February 2011. Sponsors and advertisement are welcome.

**Ad Rate: Inside front cover: \$180; inside back cover: \$180;  
back cover: \$200; inside page: full page \$150, half page \$80.  
Contact: Chen Fang (630) 639-3988**

CHIEF EDITOR

SHAOPING ZHANG

JOINT EFFORTS OF

JEAN CHENG

LU LEE

YAN ZHOU

email questions to :

[SHAOPINGZHANG@GMAIL.COM](mailto:SHAOPINGZHANG@GMAIL.COM)



## 每月一字

Word of  
the  
MonthWhat's in a Chinese Character  
What's in a Chinese Character

shǎo or shào

少

(4 strokes) Less; few; short of

shǎoliàng

少量: rare; scarce

duō shǎo

多少: how many

shàonián

少年: early youth

This character combines 小 with a stroke

“pie” to form 少. It means to cut smaller or diminish (“pie”) that which is already small (小), thus making it less. To cut short the diminishing process, the method suggested above is an effective shortcut to reduce big (大) to small (小) and small (小) to less (少).



.Practice Chinese Characters (s) here:

|  |  |  |  |  |  |  |  |
|--|--|--|--|--|--|--|--|
|  |  |  |  |  |  |  |  |
|--|--|--|--|--|--|--|--|



shèng dàn lái, xīn nián dào

圣诞来, 新年到

shèng dàn lái, xīn nián dào, shèng dàn lǎo rén bǎ lǐ wù fàng shù xià

圣诞来, 新年到, 圣诞老人把礼物放树下

guà cǎi dēng, fàng biān pào, jiā rén tuán jù hǎo rè nào

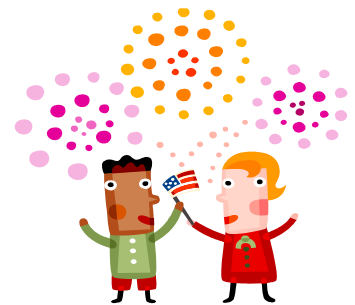
挂彩灯, 放鞭炮, 家人团聚好热闹!

zhù fú nǐ, zhù fú tā, shèng dàn kuài lè! xīn nián hǎo

祝福你, 祝福他, 圣诞快乐! 新年好!

**Christmas and New Year are Coming**

Christmas is here, New Year is around the corner,  
Santa is putting down the gifts under Christmas tree  
hanging colorful lights high,  
setting off fireworks into sky!  
how exciting when families get together  
wishing you, wishing him,  
Merry Christmas! Happy New Year! — By Lee Lu



**Traditional Chinese Festival: Winter Solstice** 冬至



As early as 2,500 years ago, China had determined the point of Winter Solstice by observing movements of the sun with a sun dial. It is the earliest of the 24 seasonal division points. The time will be each December 21 or 22 according to the Gregorian calendar. The Northern hemisphere on this day experiences the shortest daytime and longest nighttime. After the Winter Sol

stice, days will become longer and longer. As ancient Chinese thought, the yang, or muscular, positive things will become stronger and stronger after this day, so it should be celebrated.

The Winter Solstice became a festival during the Han Dynasty (206 BC-220 AD) On this day, both officials and common people would have a rest. The army was stationed in, frontier fortresses closed and business and traveling stopped. Relatives and friends presented to each other delicious food. In some parts of Northern China, people eat dumpling soup on this day; while residents of some other places eat dumplings, saying doing so will keep them from frost in the upcoming winter. But in parts of South China, the whole family will get together to have a meal made of red-bean and glutinous rice to drive away ghosts and other evil things. In other places, people also eat tangyuan, a kind of stuffed small dumpling ball made of glutinous rice flour. The Winter Solstice rice dumplings could be used as sacrifices to ancestors or gifts for friends & relatives.

**RCS Calendar and Holidays**

**December 2010**

| S              | M  | T  | W  | T  | F  | Sat                |
|----------------|----|----|----|----|----|--------------------|
|                |    |    | 1  | 2  | 3  | 4                  |
| 5              | 6  | 7  | 8  | 9  | 10 | 11                 |
| 12             | 13 | 14 | 15 | 16 | 17 | 18<br>Last Day     |
| 19<br>Last Day | 20 | 21 | 22 | 23 | 24 | 25 Merry Christmas |
| 26             | 27 | 28 | 29 | 30 | 31 | Happy New Year     |
|                |    |    |    |    |    |                    |

**January 2011**

| S  | M  | T  | W  | T  | F  | Sat            |
|----|----|----|----|----|----|----------------|
|    |    |    |    |    |    | 1              |
| 2  | 3  | 4  | 5  | 6  | 7  | 8 First Day    |
| 9  | 10 | 11 | 12 | 13 | 14 | 15             |
| 16 | 17 | 18 | 19 | 20 | 21 | 22             |
| 23 | 24 | 25 | 26 | 27 | 28 | 29 Spring Fest |
| 30 | 31 |    |    |    |    | Celebration    |